



SHEEPISH MITTENZ

By Kimberly Lewis of Woven ~N~ Spun

Stranded Mittens with an after-thought thumb knitted fingertip to cuff using one long circular needle. A companion for the "Sheepish Hat" (also a free pattern from Woven ~N~ Spun)

Directions:

With smaller needle and either light or dark brown (your choice), cast on 10 stitches using figure 8 cast on or your favorite closed ended cast on method. (5 stitches on each needle)

Knit using main yarn and tail, knit around. You will now have 5 groups of two for a total of 10 stitches on each needle.

On needle one (back of hand needle) k1 into each stitch. Repeat for needle two (palm needle) (10 stitches on each needle)

Begin increase rounds

K1, m1 (using backwards loop cast on), knit until one stitch from end of needle, m1, k1

Repeat for second needle

Continue this way of increasing until you have 28 stitches on each needle (do NOT knit one round between increase rounds)

Begin Pattern Rounds

Switch to larger needle and follow graph patterns through round 30 following charts for back of hand and palm

Left Mitten

Round 31: Knit pattern on back of hand chart (needle 1)

K2, knit 10 stitches on waste yarn, transfer stitches back to left needle, work palm chart (needle 2)

Rounds 32-47: Follow charts

Right Mitten

Round 31: Knit pattern on back of hand chart (needle 1)

K to last 12 stitches, knit 10 stitches on waste yarn, transfer stitches back to left needle, work palm chart (needle 2)

Rounds 32-47: Follow charts

Both Mitten Cuffs

Switch to smaller needle and change color to color used for fingertips

Decrease Round

K1, K2tog, [K3, K2tog] repeat [] to end. Repeat for second needle. Work 2x2 rib for 17 rounds or until desired cuff length

Bind off loosely (use larger needle if necessary)

Thumb

Using the color of your choice, pick up 10 stitches from both sides of waste yarn, plus one stitch in corner (total of 22 stitches)

Remove waste yarn and knit 14 rounds.

K1, K2tog, knit 5, K2tog, K1. Repeat for second needle.

Knit 2 rounds

[K2, K2tog] 2 times, K1. Repeat for second needle

Knit 1 round

[K1, K2tog] 2 times, K1 Repeat for second needle

Knit 1 round

K2tog around

Break off yarn, draw through tightly and weave in ends.



Finished Sizes:

One size fits most: Circumference around knuckles is 7¼ inches. For a larger size, use larger needles.

Needles:

1 32 inch size 2 (3.00 mm) circular needle

1 32 inch size 3 (3.25 mm) circular needle

Adjust needle sizes if necessary to obtain gauge

Yarn:

1 ball (50 grams) DK weight yarn in the following colors;

light brown, dark brown, green, blue, white
small amount black

Additional Materials:

stitch markers

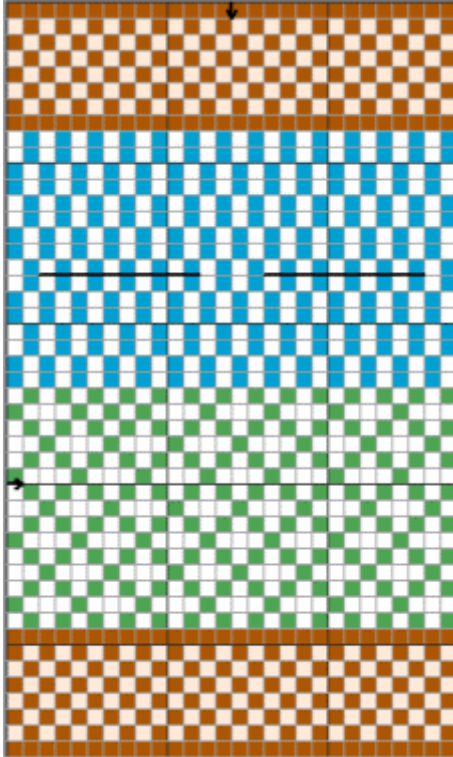
tapestry needle

waste yarn

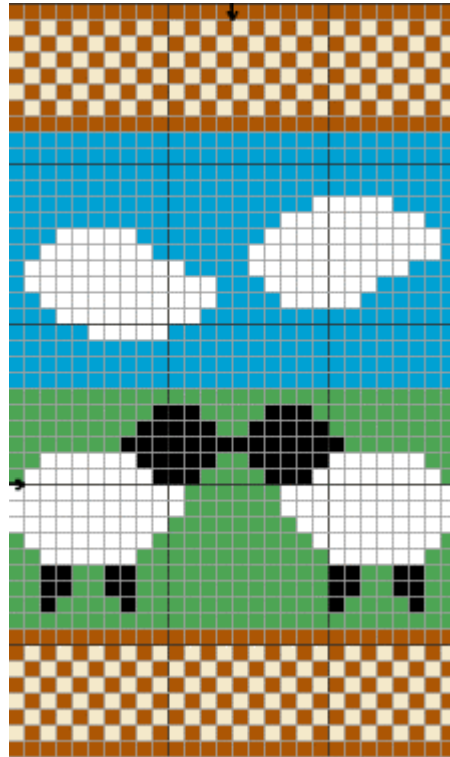
Gauge:

14 stitches = 2 inches

PALM CHART



BACK OF HAND CHART



Special Notes: We've tested this pattern using duplicate stitch for the black areas as well as stranded knitting. Both work equally well. We recommend that when using the stranded method, you use a small skein of black for each section and allow loose floats at the back of the work. If you pull too tight, you may end up with a pucker in that section. Remember to weave in the black with the green and white strands to avoid leave a hole where those colors begin and end. We added a face to our "sheepies" by separating the strands of worsted yarn into a single strand, and using that single strand for French knots (eyes) and back stitch (mouth).

Copyright information: Copyright Woven ~N~ Spun. All rights reserved. For personal, non-commercial use only. Reproduction, modification, distribution, or republication, without the prior written permission of Woven ~N~ Spun is strictly prohibited.