



RAVES ~N~ WAVES

By Kimberly Lewis of Woven ~N~ Spun

A stranded hat pattern using worsted weight yarn.

Directions:

Cast on 96 stitches. Join to make a circle being careful not to twist your stitches.

Knit 4 rounds

Brim

Round 1: with smaller needle, pick up 96 stitches from cast on edge, bring up in front and parallel to needles, insert working needle into each of the left needles and knit both stitches as one. This creates a rolled hem.

Round 2: with CC, knit

Round 3: k1, p1 around

Round 4: p1, k1 around

Round 5: k1, p1 around

Round 6: p1, k1 around

Round 7: knit

Round 8: with MC knit

Rounds 9-11: purl

Round 12: with smaller needle, pick up 96 stitches from row 9 BEHIND work, and holding needles parallel, insert working needle into each of the left needles and knit both stitches as one.

Round 13: knit

Hat Band

Follow Chart

Crown Shaping

Rounds 1-6: Change to MC repeat rounds 9-13 from brim (you may omit this step if you want a rounder crown as in the rainbow hat, however I did knit 1 round with MC)

Round 5: Knit 10, k2tog, place stitch marker, repeat around. There will now be 13 stitches between each marker. Placing a marker where indicated is not a necessity for this pattern. It sure makes it easier to remember where to decrease though ☺.

Round 6: knit

Round 7: knit to 2 stitches before marker, k2 tog, repeat around.

Switching to dpns when necessary, repeat rounds 6 and 7 until 2 stitches between each marker, then k2tog all around (8 stitches).

Break off yarn and using tapestry needle, thread needle through remaining stitches and pull tightly. Weave in all ends.

Enjoy.



Finished Size(s):

One size fits most: Circumference 22"

Needles:

Size 6 (US) 16 inch circular knitting needle plus dpns in same size or a long circular if doing magic loop method

Adjust needle sizes if necessary to obtain gauge

Smaller needle to pick up stitches

Yarn:

For Blues: 1 ball (50 grams) worsted weight yarn in the following colors, winter white, dark blue, light blue

For Rainbow: 1 ball (50 grams) worsted weight yarn in the following colors black, red, orange, yellow, green, blue, purple

Additional Materials:

stitch markers

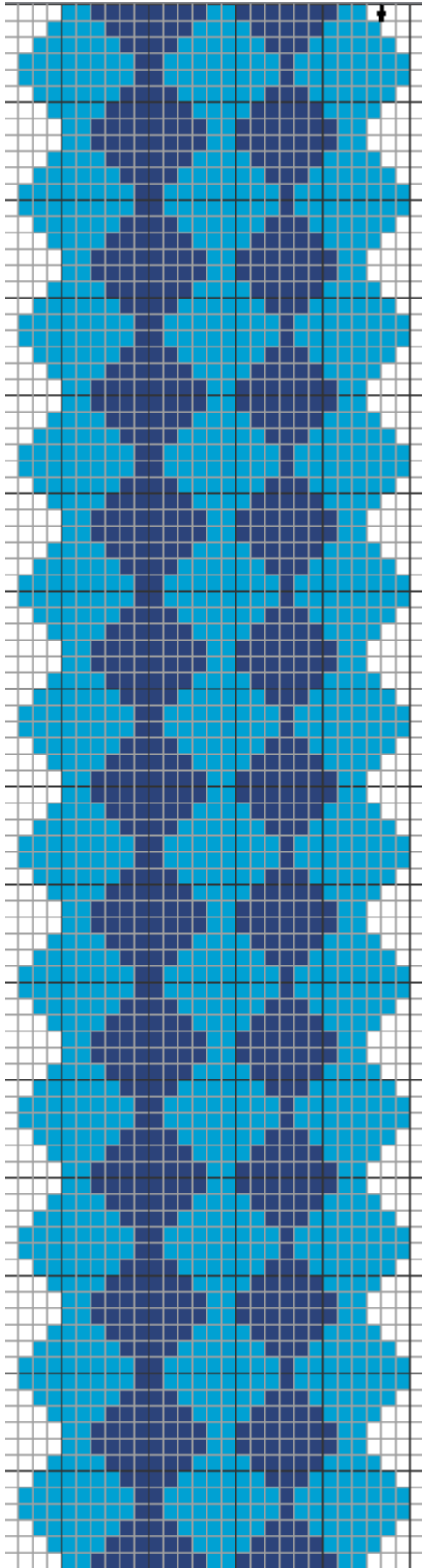
tapestry needle

waste yarn

Gauge:

14 stitches = 2 inches

Brim Chart



Special Notes: For the rainbow hat, we simply substituted rainbow colors for each color change on the chart instead of working with blues and white.

Copyright information: Copyright Woven ~N~ Spun. All rights reserved. For personal, non-commercial use only. Reproduction, modification, distribution, or republication, without the prior written permission of Woven ~N~ Spun is strictly prohibited.